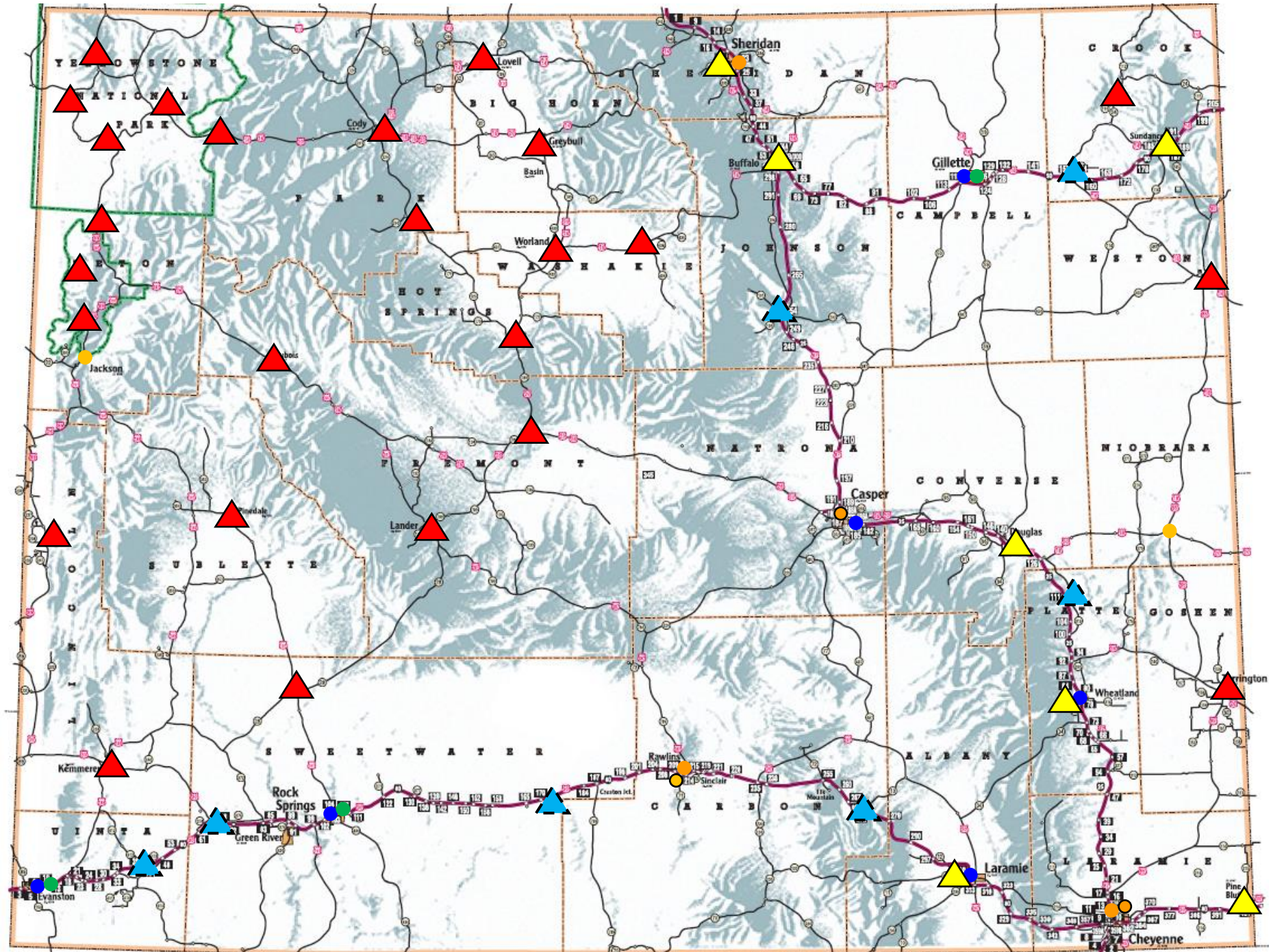


Overall Recommended Plan

Legend

- NEVI Tesla Station
- Tesla Station
- NEVI Elec. Amer. Station
- Elec. Amer. Station
- ▲ Add NEVI Station
- ▲ Route Station
- ▲ Possible Additional Corridor Station (Non-NEVI sized)

▲ and ▲ stations are notional locations actual sites will be determined by local businesses and jurisdictions based upon EV traffic requirements



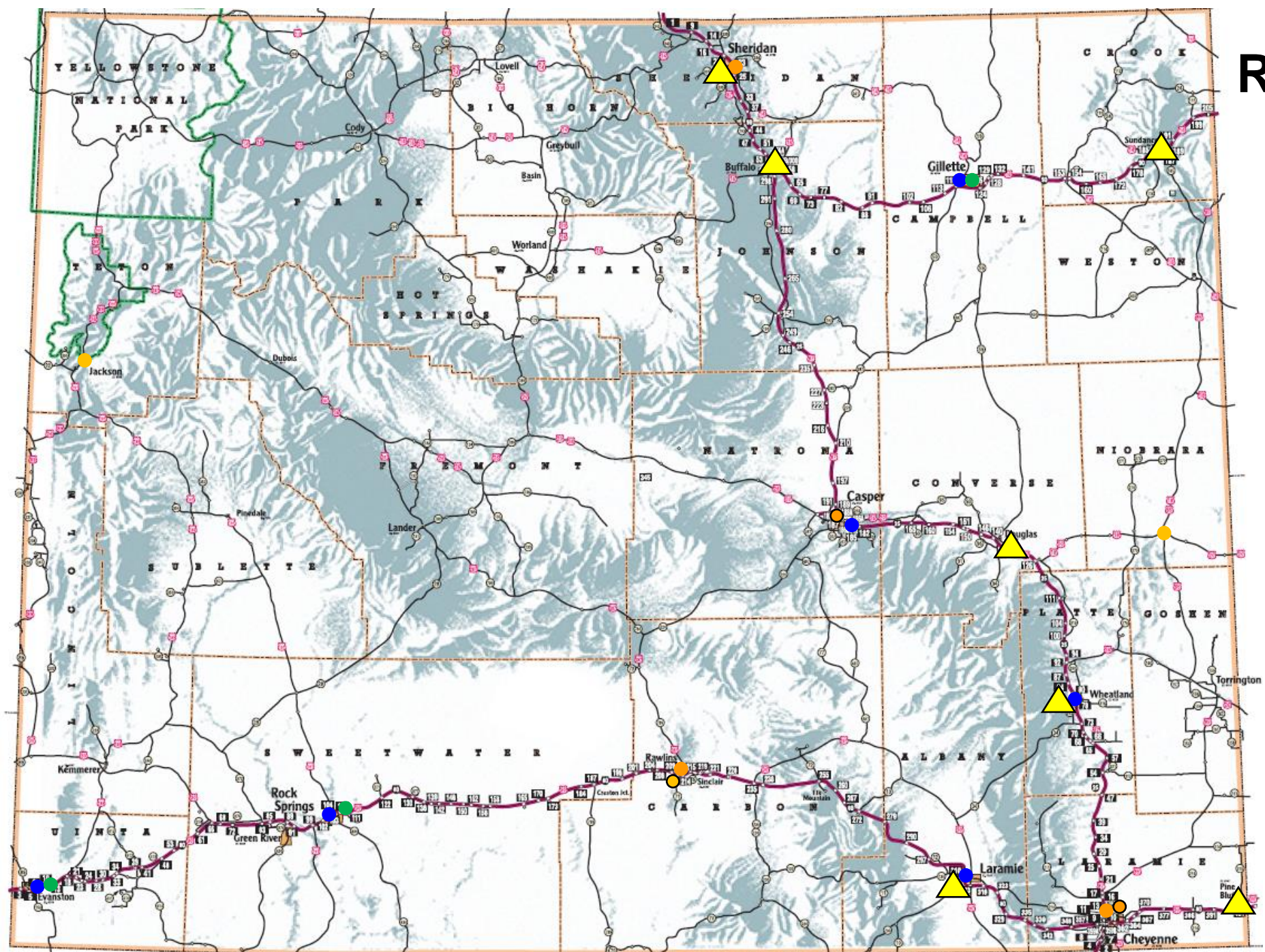
No Exceptions Recommendation

Legend

- NEVI Tesla Station
- Tesla Station
- NEVI Elec. Amer. Station
- Elec. Amer. Station
- ▲ Add NEVI Station

Recommend only funding stations at
Pine Bluffs
Douglas
Kaycee
Buffalo
Sheridan
Wheatland
Laramie

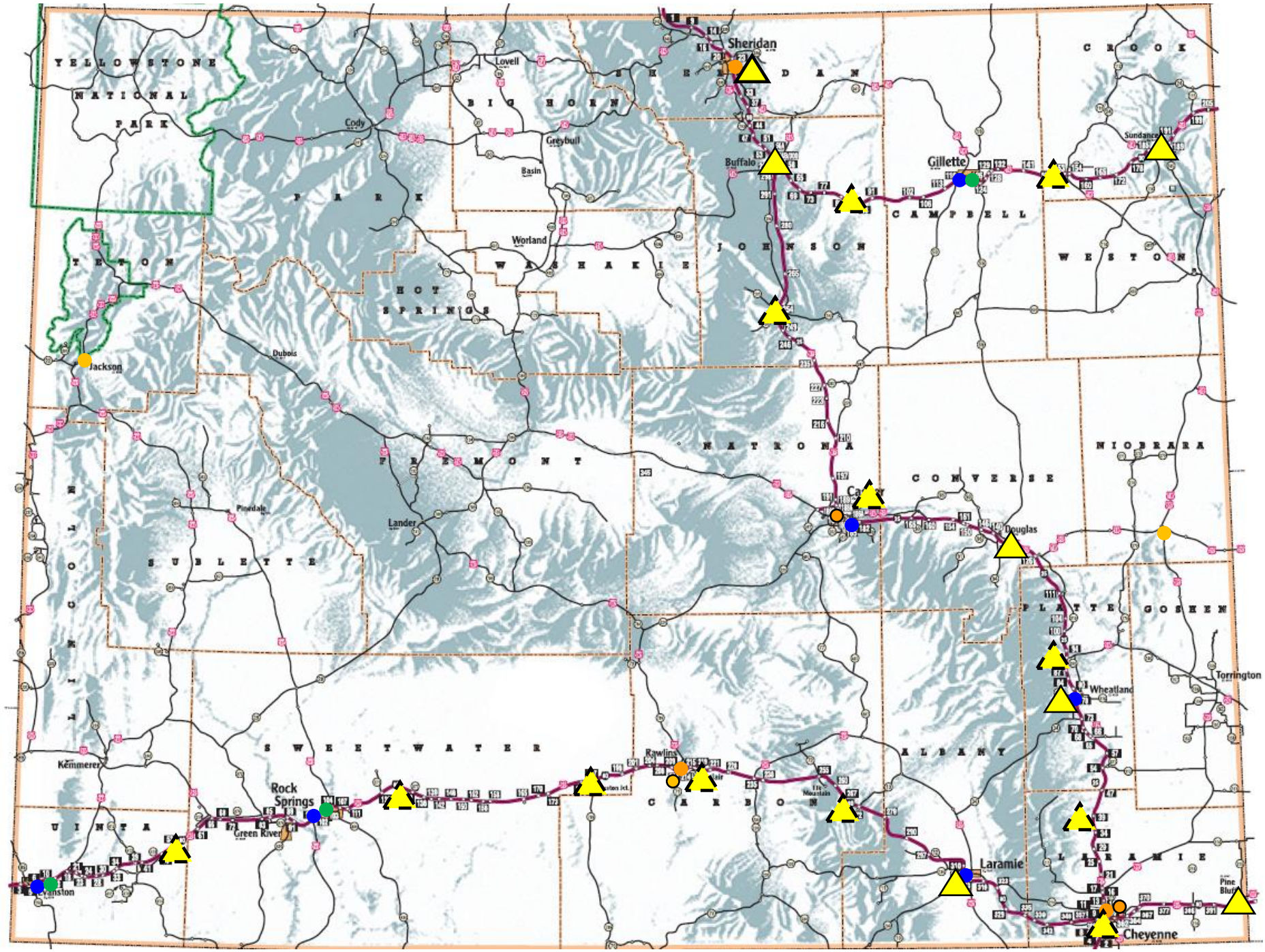
Plan to turn leftover funds back to FHWA



NEVI Compliant No Exceptions

Legend

- NEVI Tesla Station
- Tesla Station
- NEVI Elec. Amer. Station
- Elec. Amer. Station
- ▲ Add NEVI Station
- ▲ Possible NEVI Station

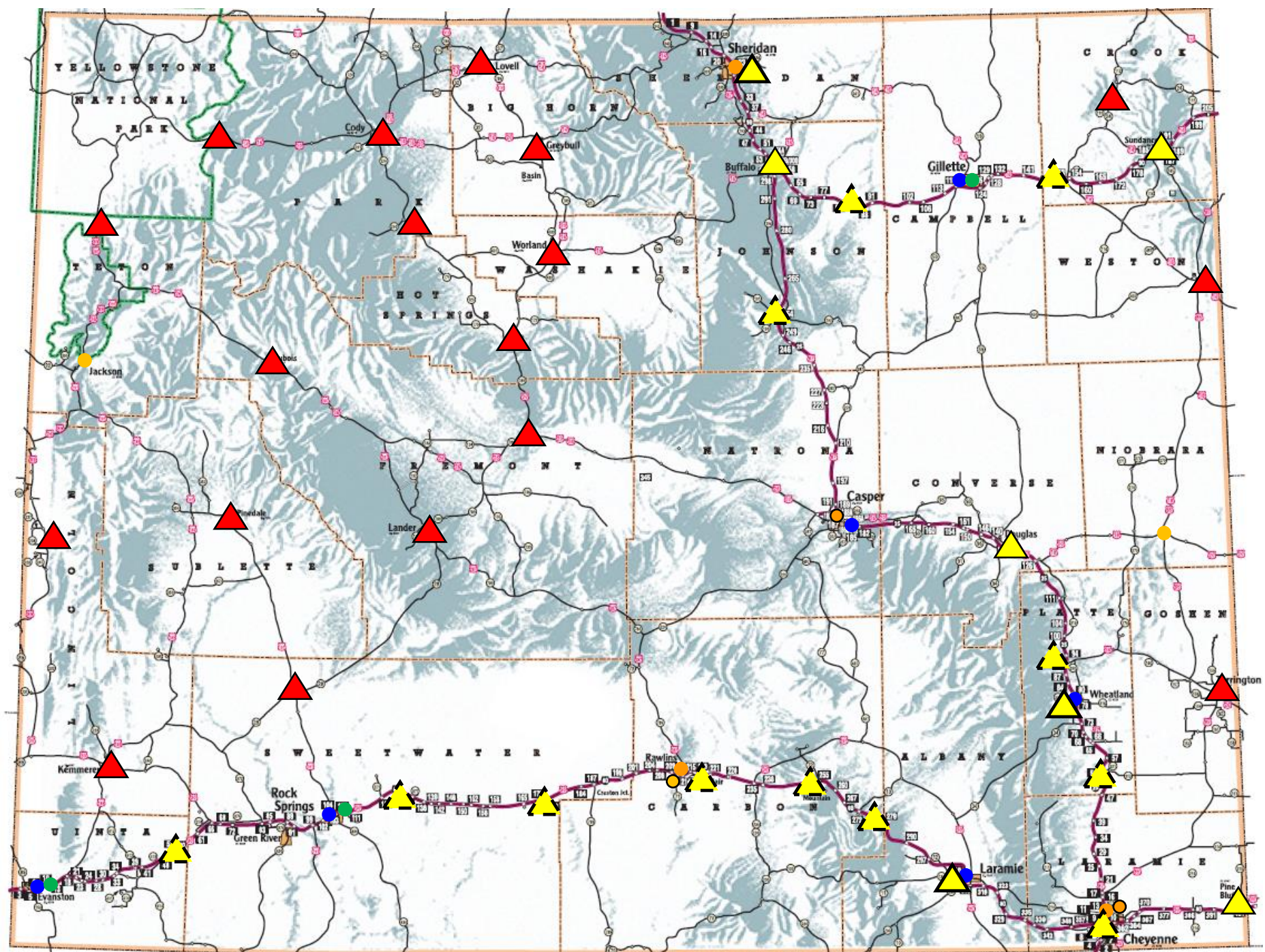


No Exceptions With Route Build Out

Legend

- NEVI Tesla Station
- Tesla Station
- NEVI Elec. Amer. Station
- Elec. Amer. Station
- ▲ Add NEVI Station
- ▲ Possible NEVI Station
- ▲ Route Station

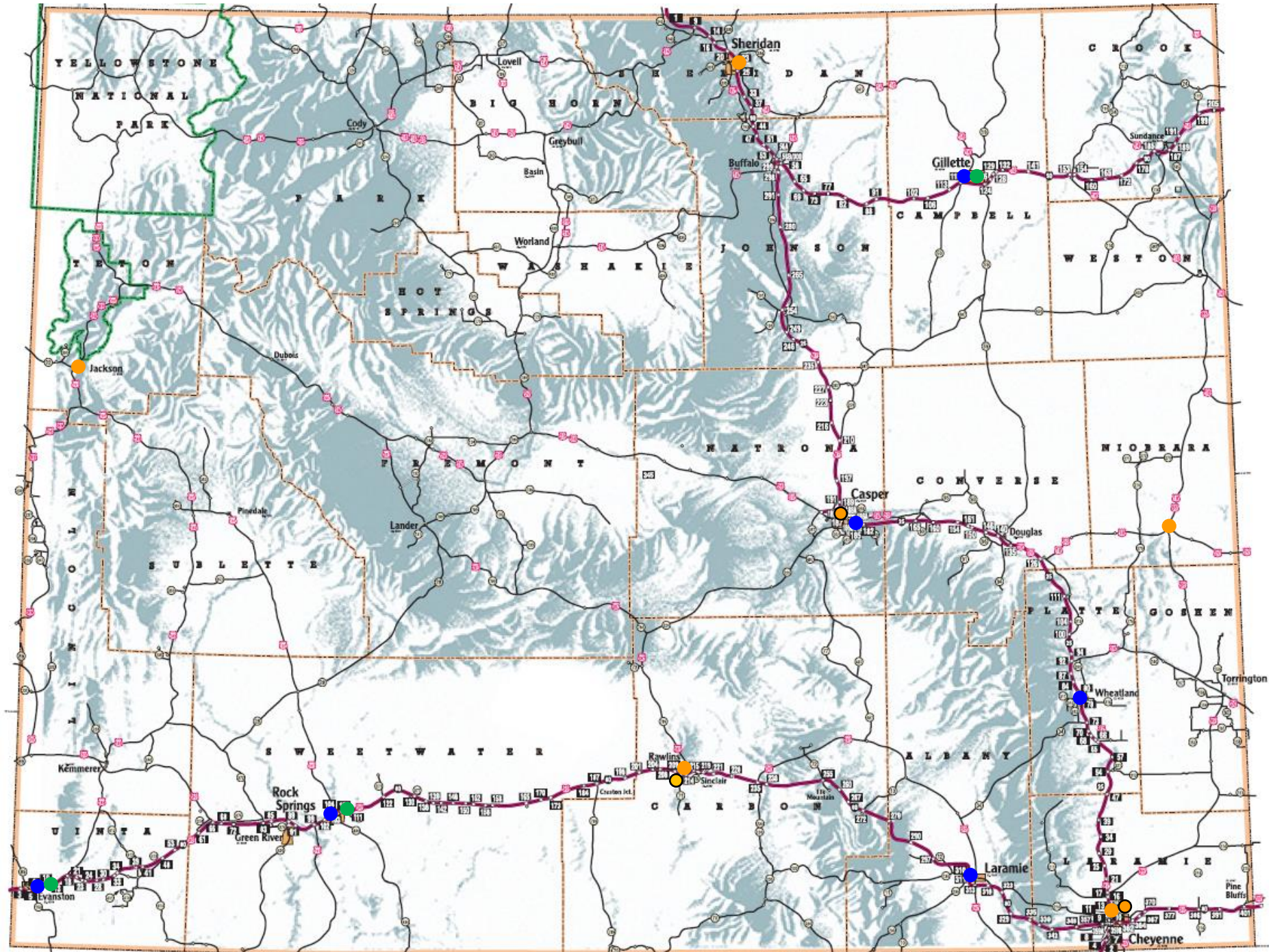
Note, if exceptions are not approved many ▲ stations will not receive NEVI funding and will have to rely on available VW settlement funds, discretionary grants, or other private / jurisdictional funding.



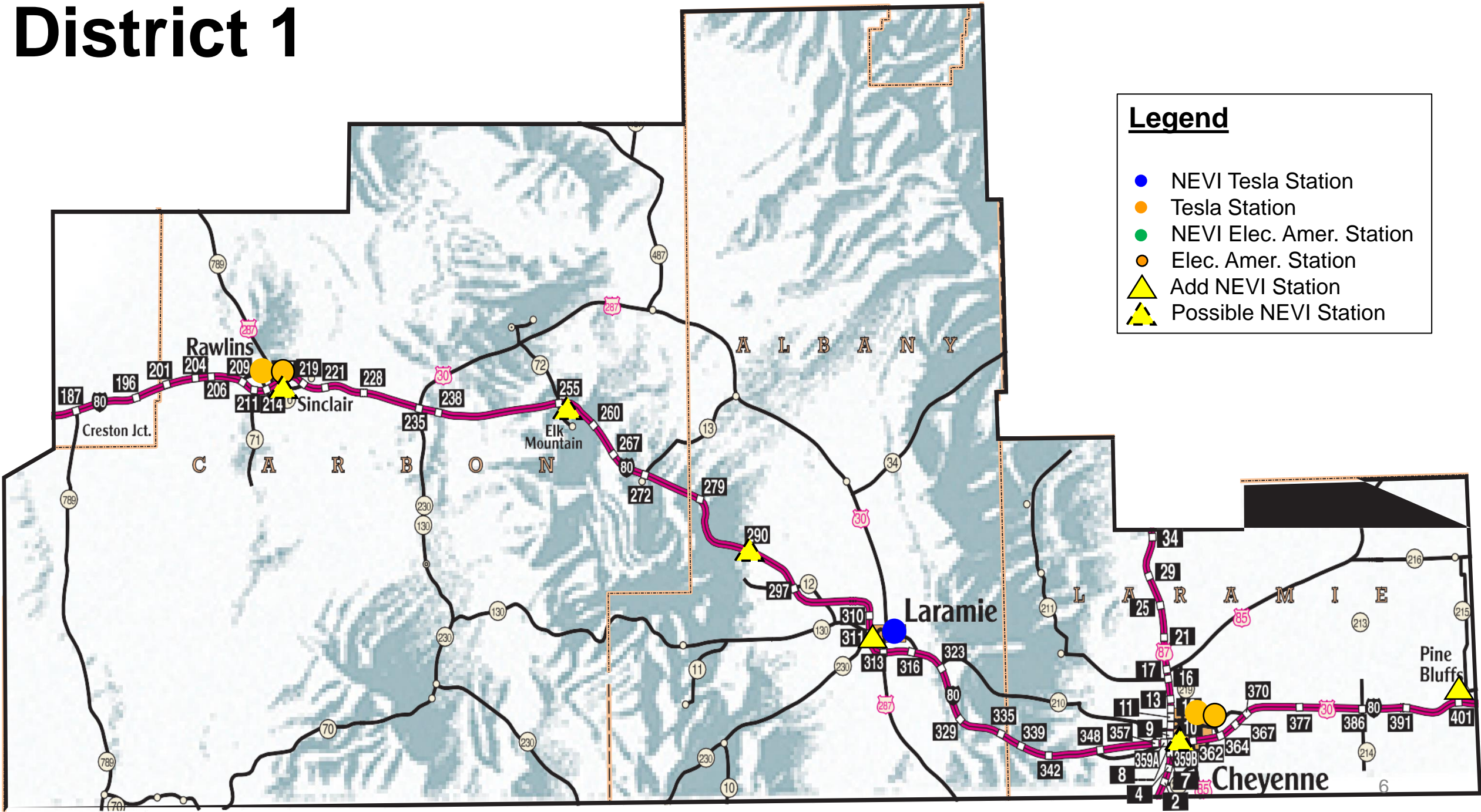
Current Corridor Locations

Legend

- NEVI Tesla Station
- Tesla Station
- NEVI Elec. Amer. Station
- Planned Elec. Amer. Station



District 1



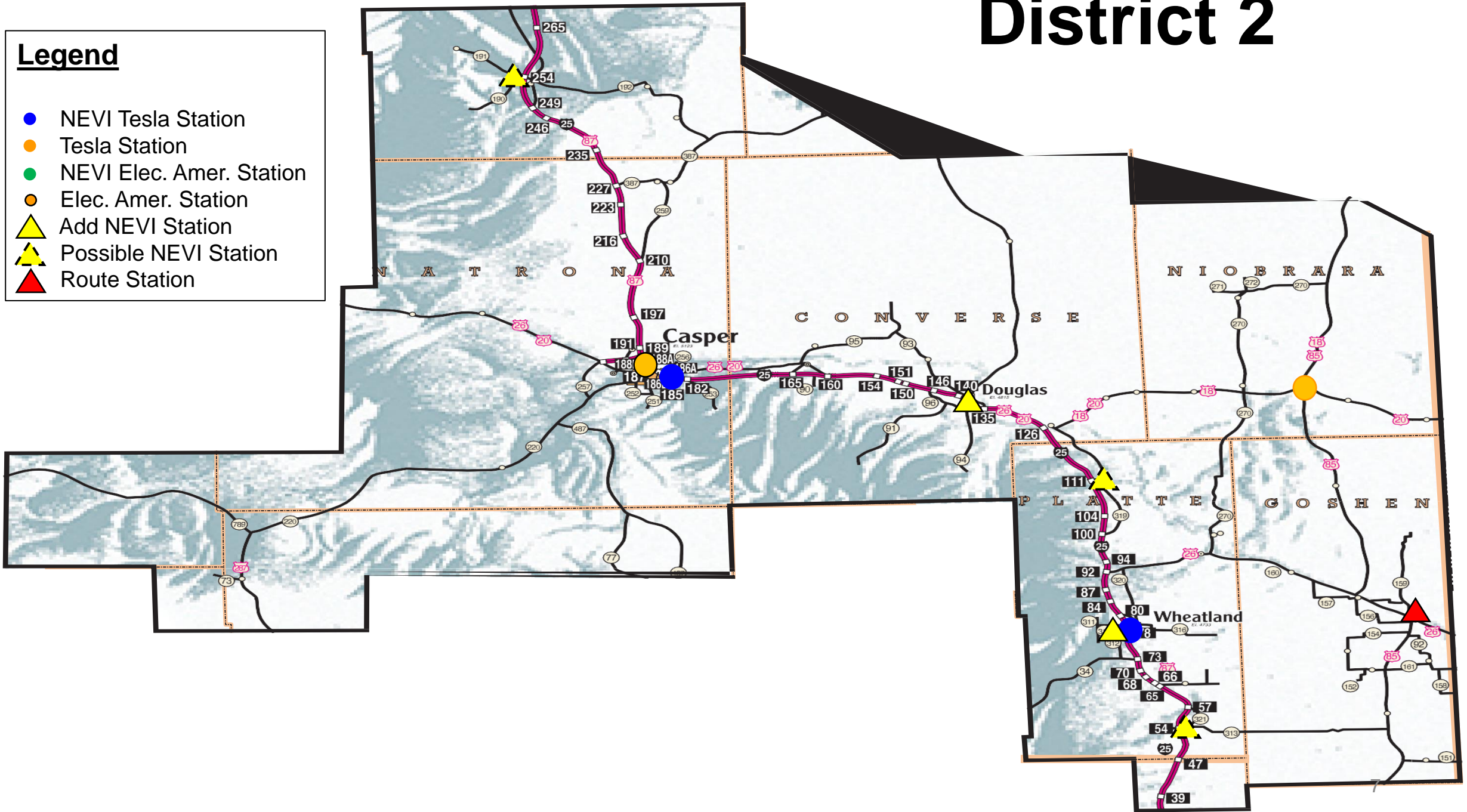
Legend

- NEVI Tesla Station
- Tesla Station
- NEVI Elec. Amer. Station
- Elec. Amer. Station
- ▲ Add NEVI Station
- ▲ Possible NEVI Station

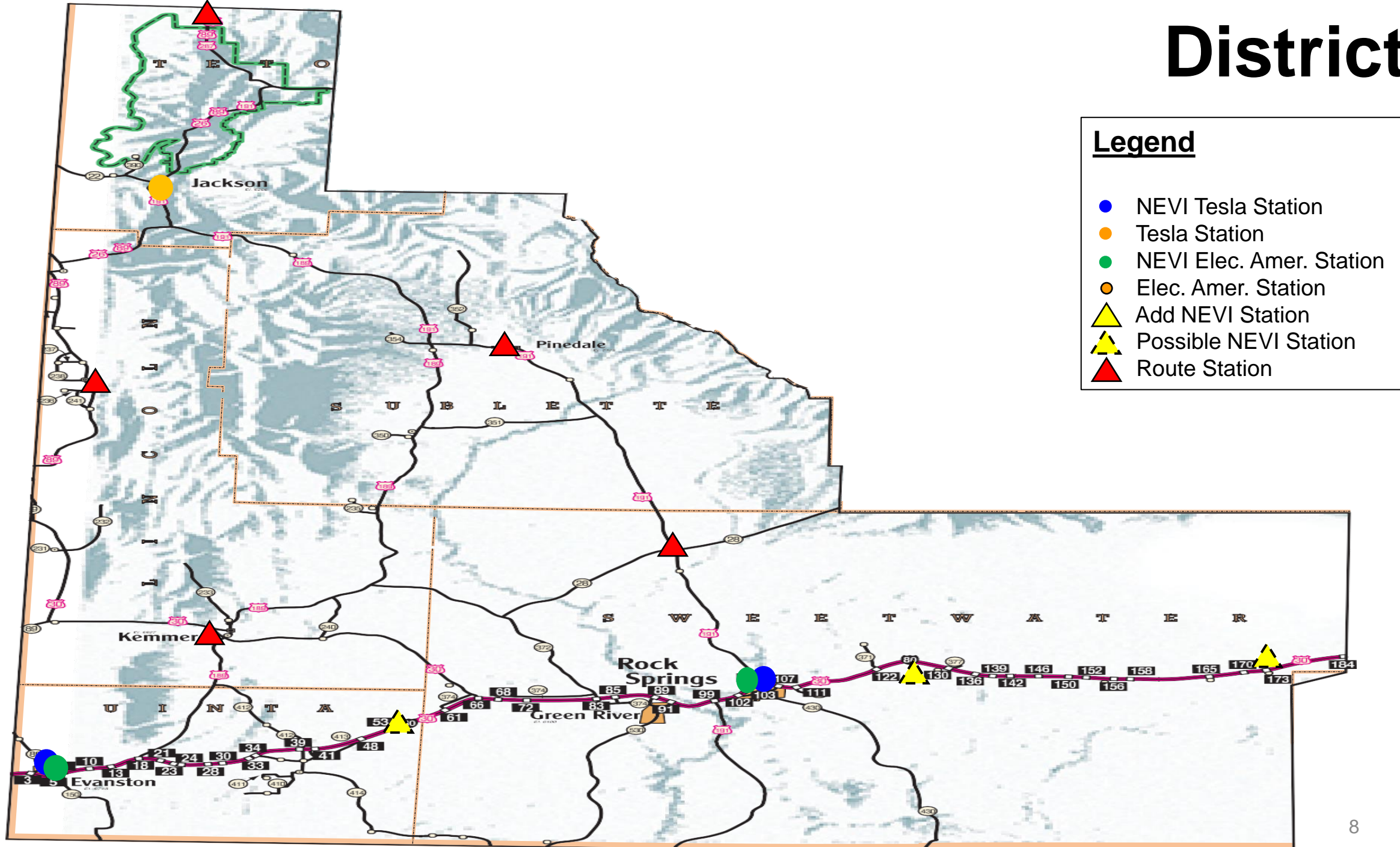
District 2

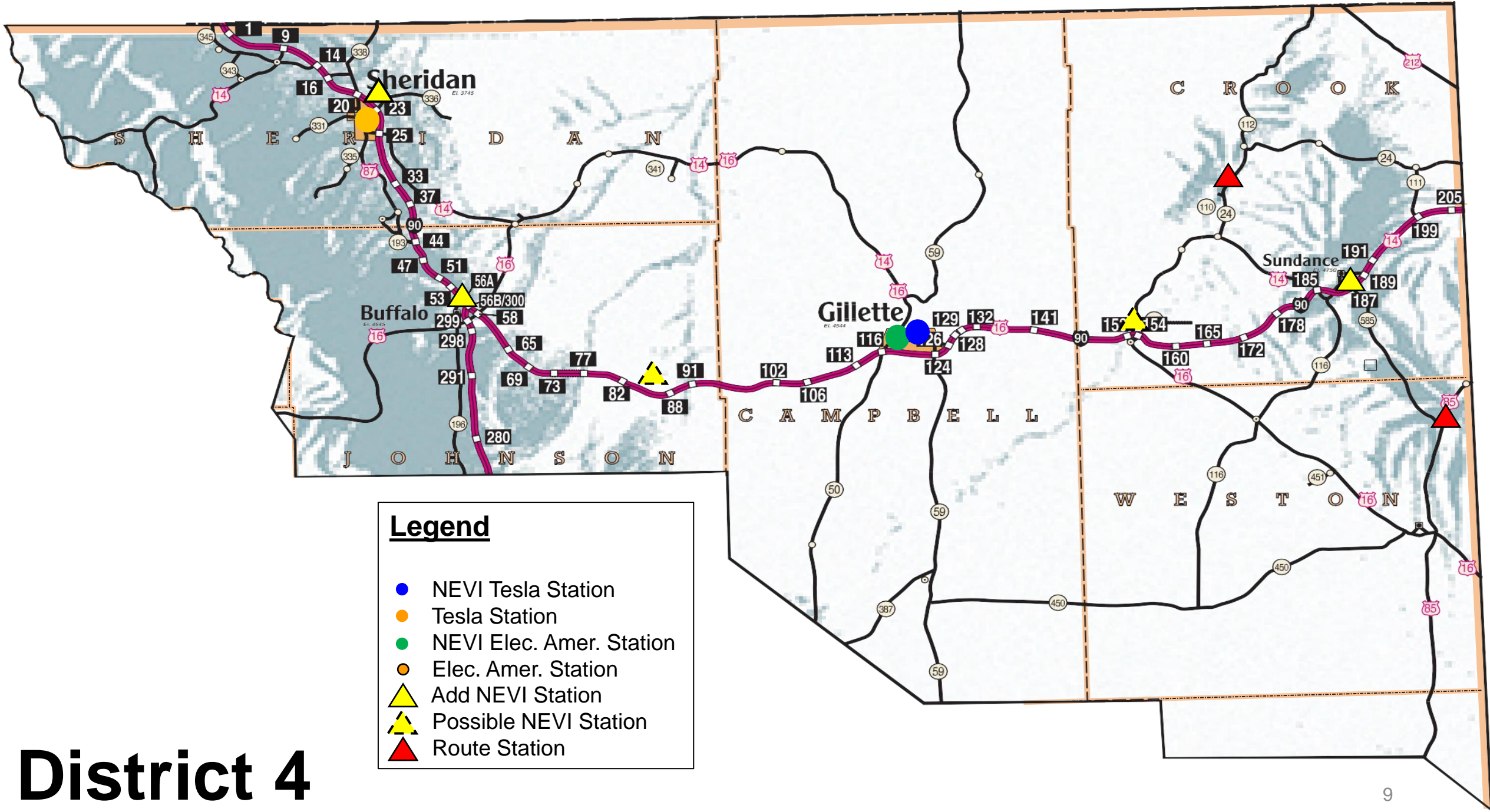
Legend

- NEVI Tesla Station
- Tesla Station
- NEVI Elec. Amer. Station
- Elec. Amer. Station
- ▲ Add NEVI Station
- ▲ Possible NEVI Station
- ▲ Route Station



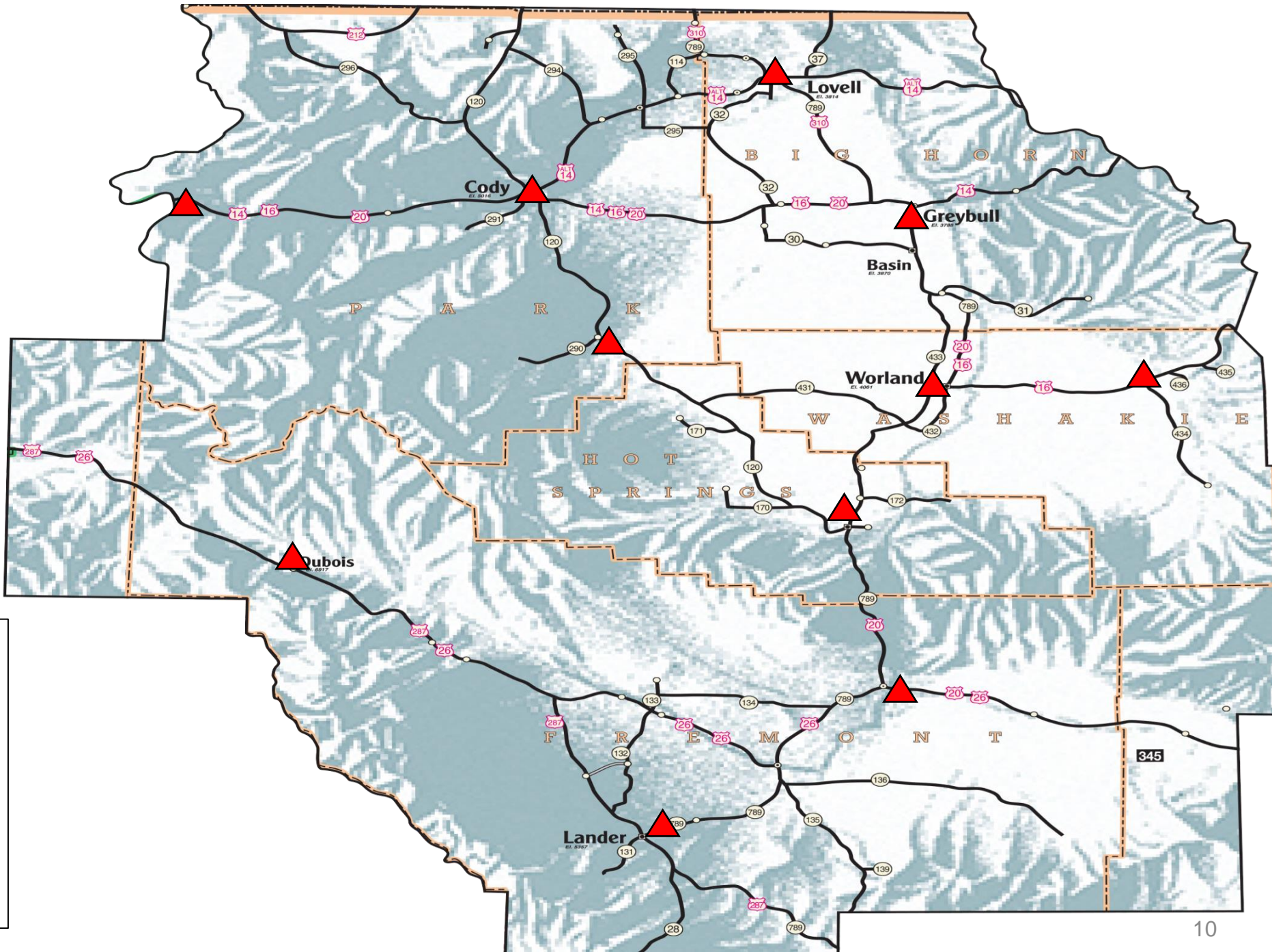
District 3





District 4

District 5



Legend

- NEVI Tesla Station
- Tesla Station
- NEVI Elec. Amer. Station
- Elec. Amer. Station
- ▲ Add NEVI Station
- ▲ Possible NEVI Station
- ▲ Route Station