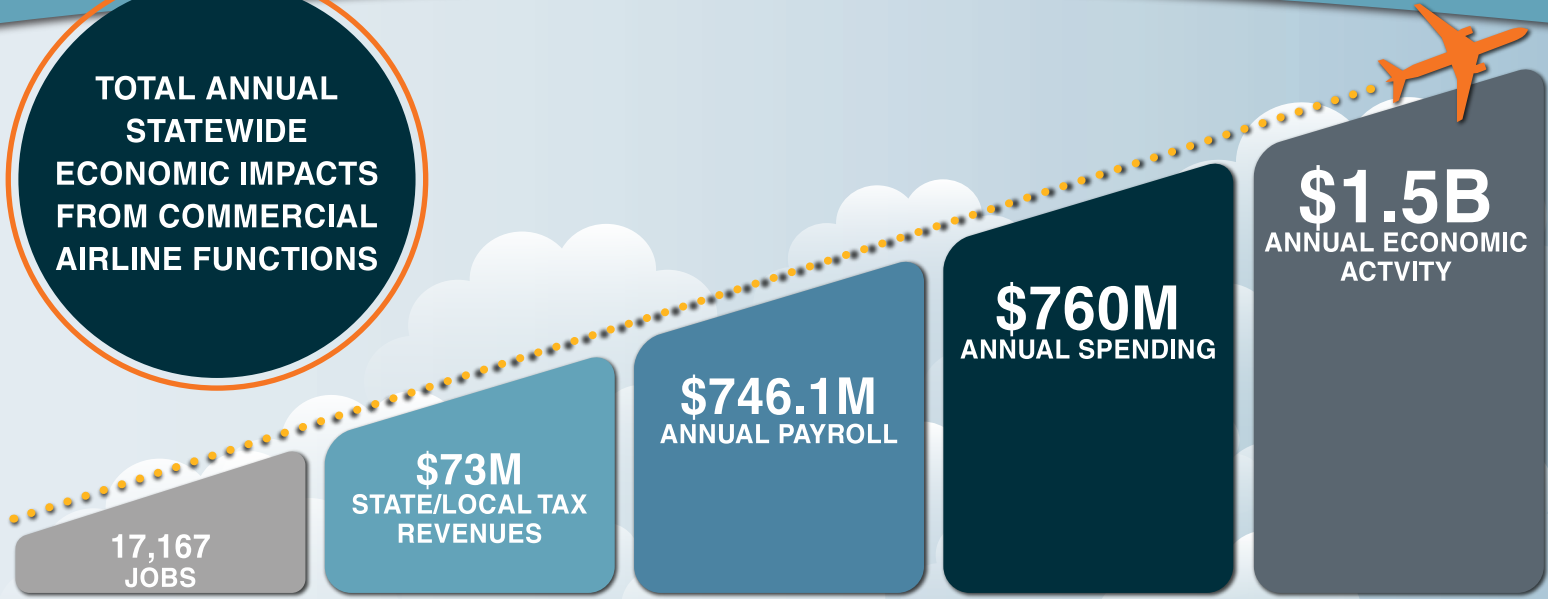




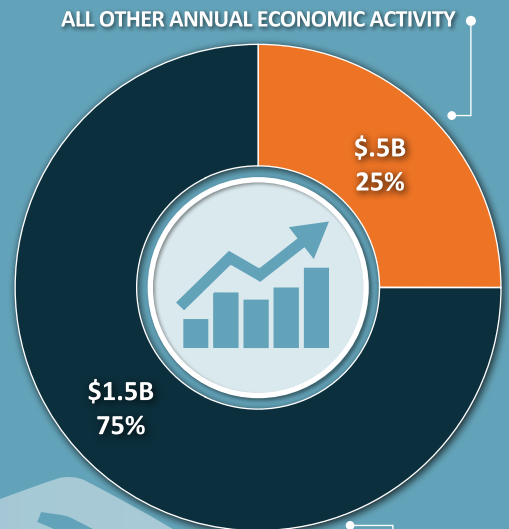
# FACTS ON WYOMING'S COMMERCIAL AIRLINE SERVICE ECONOMIC IMPACTS

**TOTAL ANNUAL  
STATEWIDE  
ECONOMIC IMPACTS  
FROM COMMERCIAL  
AIRLINE FUNCTIONS**



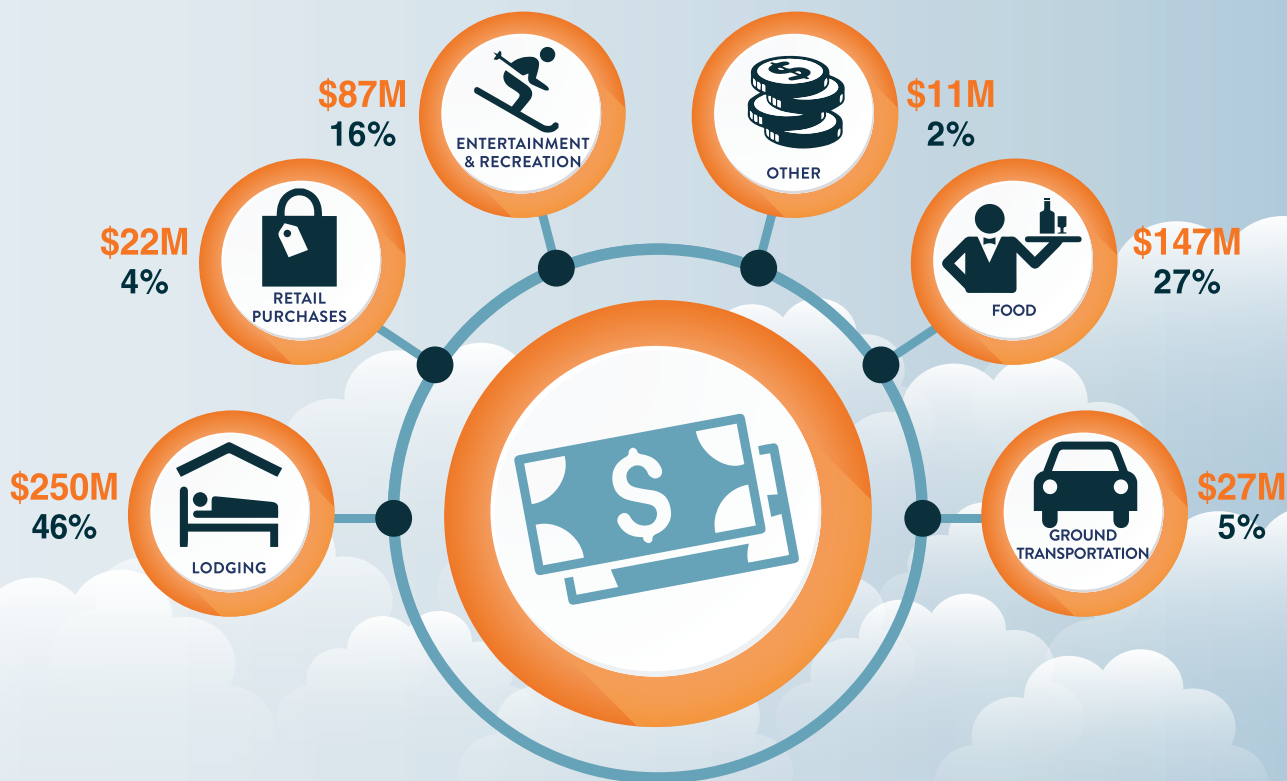
## INFORMATION ON COMMERCIAL AIRLINE SERVICE IN WYOMING

- Between 2018 and 2019, among all states, Wyoming had the highest percentage growth in boarding passengers, a **14% increase**
- **70%** of all passengers using commercial airline service in Wyoming are visitors to the state
- Activities supported by commercial airlines generate **\$1.5 billion** in annual economic activity, **75%** of all economic activity associated with Wyoming's commercial and general aviation airports
- Total annual economic activity in Wyoming increased from **\$1.1 billion** in 2013 to **\$1.5 billion** in 2020.



# COMMERCIAL AIRLINE VISITORS SPEND \$544M ANNUALLY IN WYOMING

## ANNUAL VISITOR SPENDING BY CATEGORY



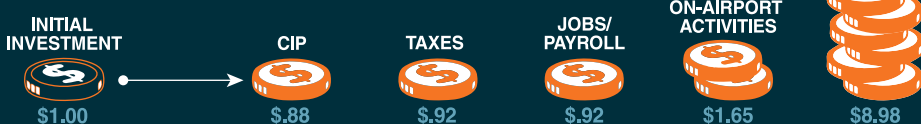
### WYOMING'S COMMERCIAL AIRLINE FLIGHTS SUPPORT

<b>BUSINESS EFFICIENCY:</b> Wyoming-based and visiting businesses rely on commercial airline travel	<b>CONNECTIVITY:</b> Commercial airline service connects Wyoming to domestic and international destinations	<b>HEALTH CARE:</b> Wyoming residents use commercial airline flights to travel for medical care	<b>TOURISM:</b> Over 518,000 visitors arrive annually on an airline flight, resulting in \$1.2 billion in annual visitor-related economic activity	<b>ECONOMIC DEVELOPMENT:</b> Commercial airline service is essential in attracting high quality jobs and businesses

### CUMULATIVE 17-YEAR BENEFITS FROM WYOMING'S AIR SERVICE ENHANCEMENT PROGRAM (ASEP)

- \$60.5M invested to support service on 81 different routes
- Investment generated \$808M in direct economic output
- Investment supported over 9,500 on- and off-airport jobs
- Investment produced over 451,000 incremental visitors to Wyoming
- Investment generated total incremental visitor spending of over \$583M
- Investment resulted in incremental state sales tax revenues of over \$55.8M

**\$1 IN ASEP INVESTMENT = \$13 IN DIRECT ECONOMIC RETURN**



### AVERAGE ANNUAL IMPACTS FROM ASEP (2004 - 2020)

- \$3.5M invested annually to support and retain commercial air service
- \$47.5M in direct annual economic output generated from investment
- 26,580 incremental annual commercial air visitors arrived in Wyoming
- \$34M in annual incremental visitor spending
- \$3.3M in incremental state and local tax revenues

